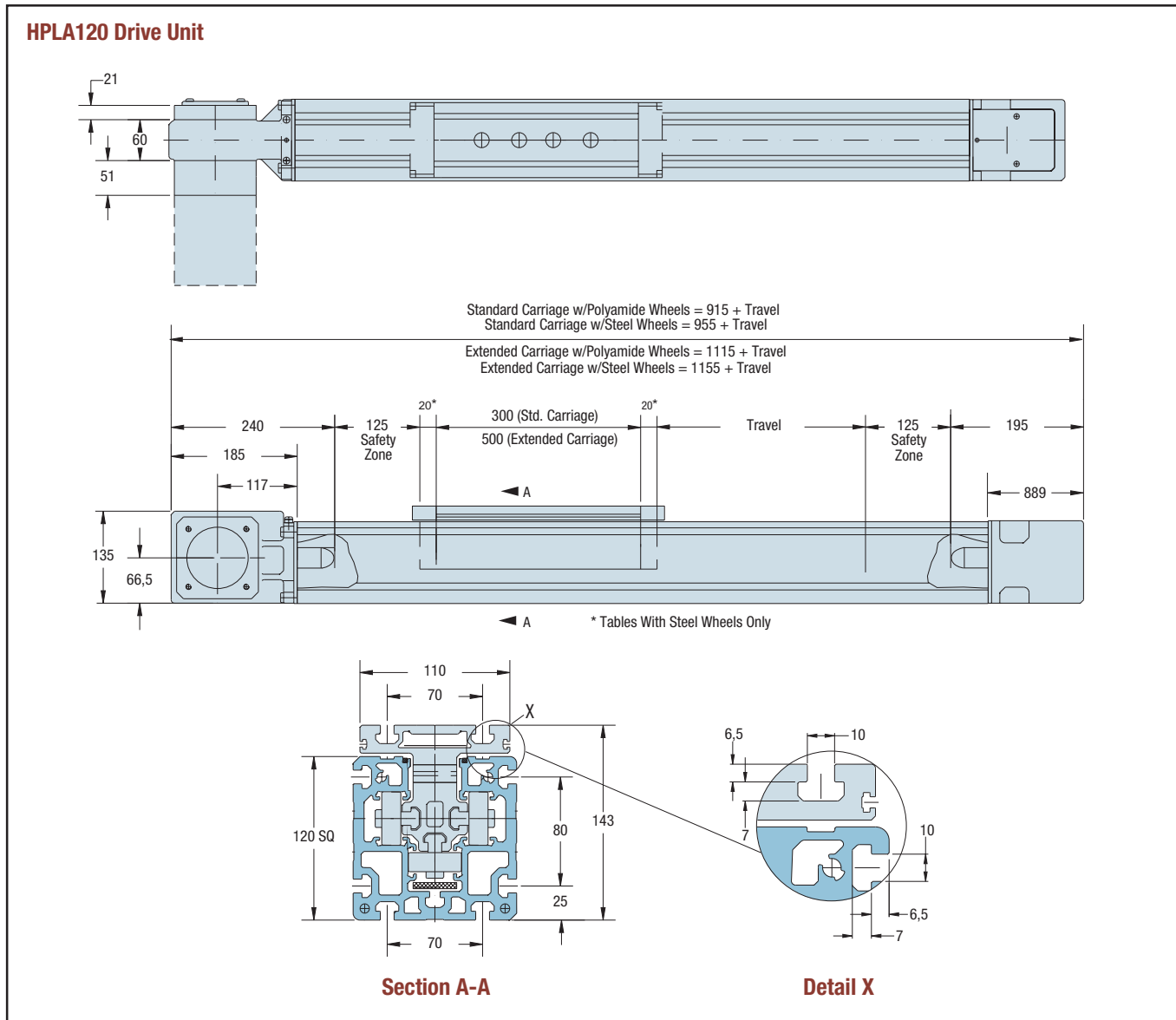
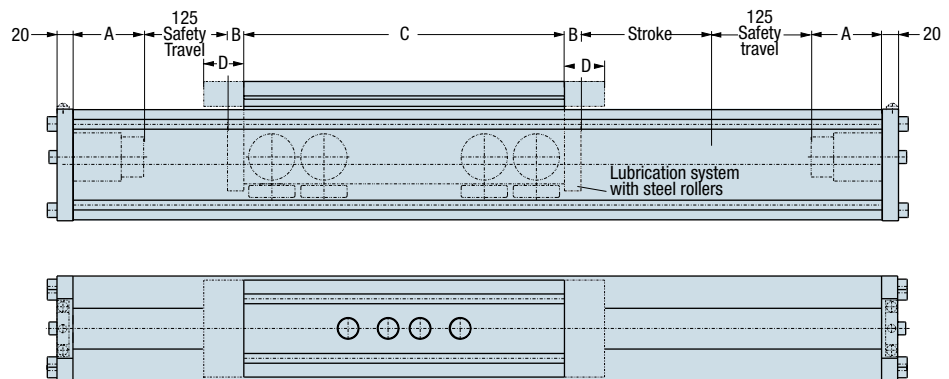


HPLA120 Dimensions (mm)



HPLA120 & 180 Idler Unit

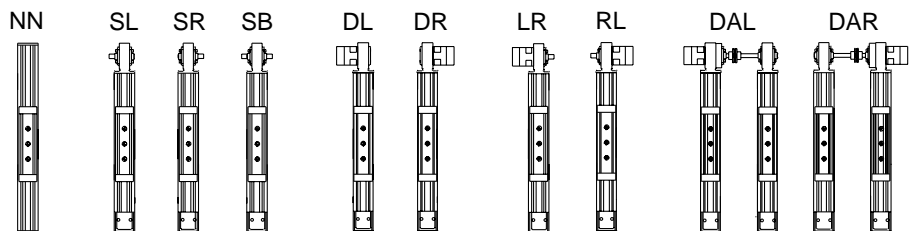
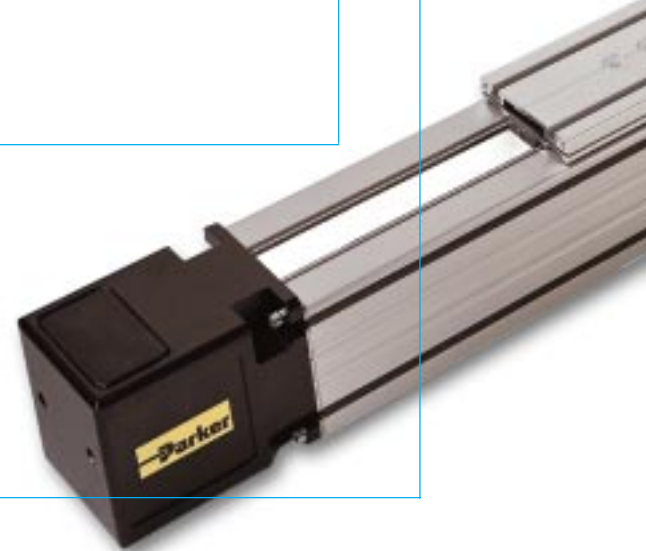


HPLA Series How to Order

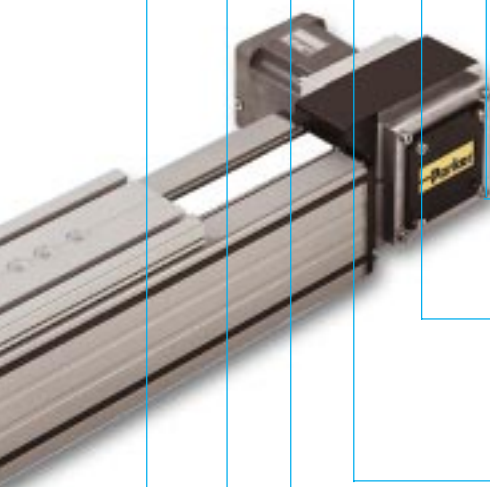
Order Example

LA B 120 E P nnnn DL V

- Model Series** LA
- Drive System**
 - Timing Belt Drive B
 - Idler Unit N
 - Double Unit D
- Type**
 - 120 (Dim. Drawing on B52) 120
 - 180 (Dim. Drawing on page B53) 180
- Carriage**
 - Standard Carriage with Load Attachment Plate... S
 - Extended Carriage with Load Attachment Plate .. E
- Guide System**
 - Roller Bearing, Polyamide Wheels P
 - Steel Wheels H
- Stroke**
 - Specify Desired Stroke (in mm) nnnn
- Drive Options**
 - Idler Unit (Dim. Drawing page B52) NN
 - Shaft on Left (Consult Factory) SL
 - Shaft on Right (Consult Factory) SR
 - Shaft on Both Sides (Consult Factory) SB
 - Without Drive - Prepared for Left Side Drive NL
 - Without Drive - Prepared for Right Side Drive NR
 - Gearbox on Left DL
 - Gearbox on Right DR
 - Gearbox on Left and Shaft on Right (Consult Factory) LR
 - Gearbox on Right and Shaft on Left (Consult Factory) RL
 - Double Axis, Reducer Left DAL
 - Double Axis, Reducer Right DAR
- Gearbox Flange**
 - Without drive - Idler unit N
 - Flange suitable for Zenith planetary gears PRN/UTN 92 U (HPLA 120 Only)
 - Flange suitable for Zenith planetary gears PRN/UTN 115 V (HPLA 120 and 180)
 - Flange suitable for Zenith planetary gears PRN/UTN 142 W (HPLA 180 Only)



GZSC05 F03 0000 C N N H2 M26 LH3



Limit/Home Switch Option

- LH0** No limit switch assembly
- LH1** Three mechanical switches, 1 NO and 1 NC contact
- LH2** Two mechanical switches, One prox
- LH3** Three NPN prox switches, 5-30 VDC
- LH4** Three PNP prox switches, 5-30 VDC

Motor Option*

- M00** No Motor
- M01** Customer Supplied
- M26** HDY92E4-44S
- M28** HDY115A6-88S
- M29** HDY115C6-88S
- M32** HDY142C6-88S
- M43** J0921GR-NMSN
- M44** J0922JR-NMSN
- M45** J0923KR-NMSN
- M46** J0921GE-NMSN
- M47** J0922JE-NMSN
- M48** J0923KE-NMSN

*Zeta stepper motors equipped with 3 meter cable. Servo motor cables not included (ordered separately).

Mounting Orientation

- H1** Carriage up
- H2** Carriage down
- H3** Carriage on side, drive station up
- H4** Carriage on side, drive station down

Linear Encoder

- N** Without linear encoder (Standard)
- L** With linear encoder (Consult Factory)

Material Option

- N** Standard version
- V** Corrosion-resistant version (Consult Factory)

Steel Strip Cover

- N** Without steel strip cover
- C** With steel strip cover (Protection Class IP30)

Center Distance with Dual Axes (From Center to Center)

- nnnn** Specify desired center distance (in mm)
- 0000** Specify for single axis or idler unit

Motor Flange Options

- F00** No Flange
- F01** Motor Flange to Mount HDY92/NO92 (GZSF,GZSG, GZSJ,92 mm and 115 mm Gearboxes Only)
- F02** Motor Flange to Mount HDY115 (GZSF,GZSG, GZSJ,115 mm Gearboxes Only)
- F03** Motor Flange to Mount HDY142 (GZSH,GZSI,142 mm Gearboxes Only)

Gearbox Option*

- GAA00** No Reducer
- GABnn** Customer Supplied Reducer
- GZSCnn** PRN-092, Universal Flange (120 Only)
- GZSDnn** WPL90, Universal Flange (120 Only)
- GZSEnn** UTN-092, Universal Flange (120 Only)
- GZSFnn** PRN-115, Daedal Option-Universal Flange (120 & 180)
- GZSGnn** WPL-115, Universal Flange (120 & 180)
- GZSJnn** UTN-115, Daedal Option-Universal Flange (120 & 180)
- GZSHnn** PRN-142, Universal Flange (180 Only)
- GZSI00** UTN-142, Universal Flange (180 Only)

*In-line single stage ratios: 3:1, 5:1, 8:1, 10:1
In-line dual stage ratios: 15:1, 25:1
Right angle ratios: 5:1, 8:1, 10:1
Right angle gear reducers mounted parallel to actuator.