

Parker Linear Motor Solutions



Application Tools and Support

- Sizing and selection software
- CAD drawings – download from web
- CD with complete product information including FAQs
- Factory application engineers
- Regional field engineers
- Local automation technology centers
- Complete product testing and documentation

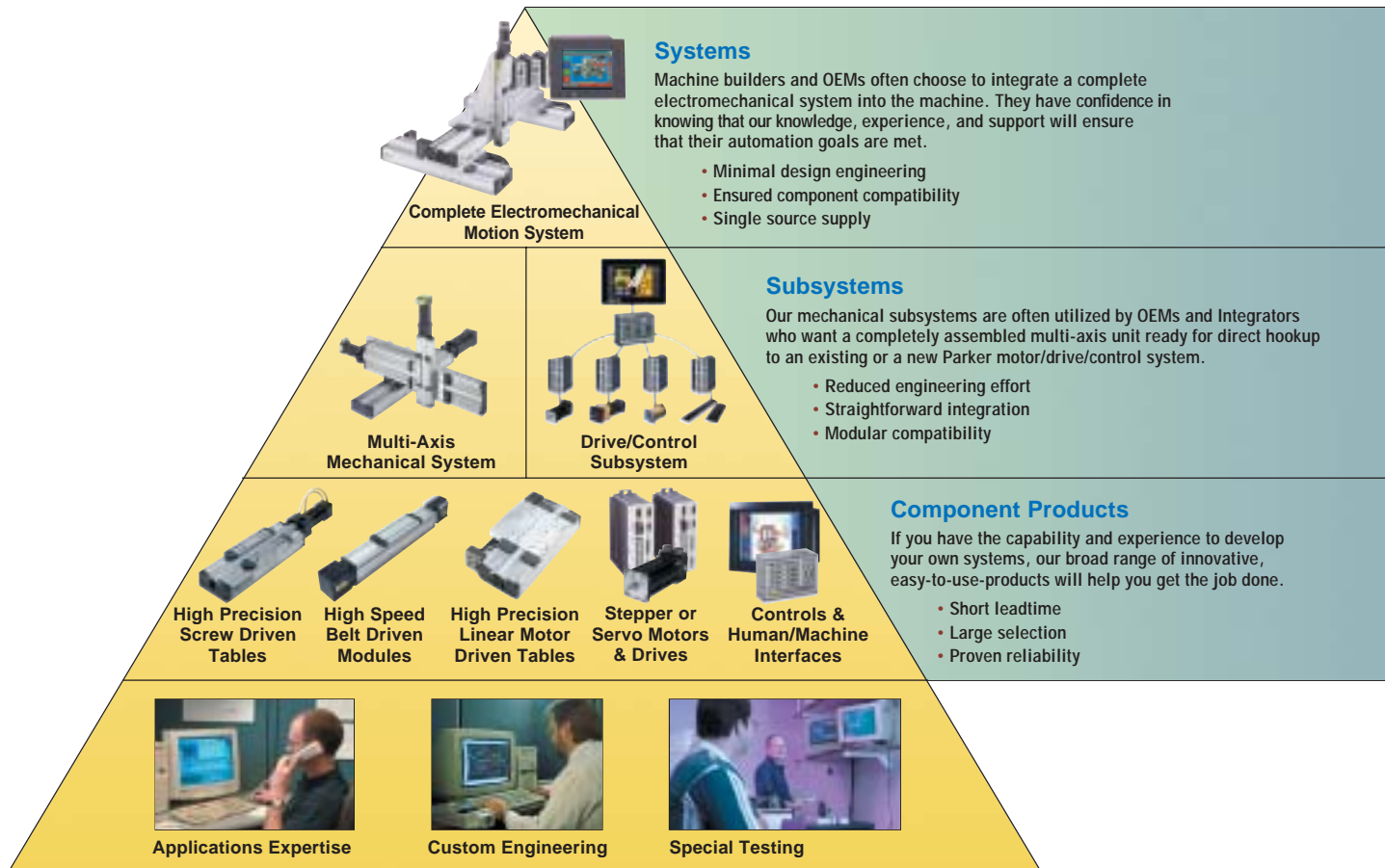
Linear Servo Motors

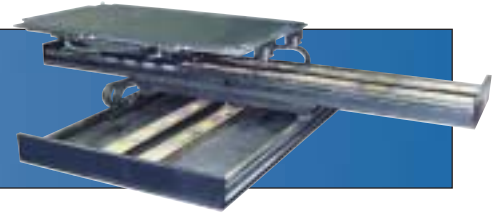
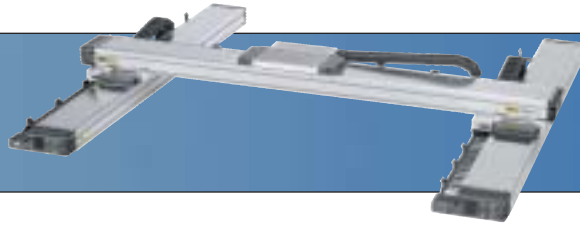
- Complete size range to 240 lb. force
- Fastest response and settling time
- Single-row slotless design
- Lower cost and weight (compared to ironless design)
- Better heat dissipation
- Custom cables, connectors, windings, etc. for special requirements

Linear Motor Tables

- Pre-engineered “plug and play” module
- Certified accuracy and repeatability
- Velocity to 3 m/sec.
- Acceleration to 5 Gs
- Encoder resolution to 0.1 microns
- Long life cable management system
- Proven protective strip seal
- Quick delivery

Selectable Levels of Integration





Digital Servo Drives

- Optimized parameters for linear motors
- Pre-configured motor files for easy setup
- Sinusoidal commutation with encoder feedback
- Connectorized cabling for easy hookup
- Drive / controller models for direct motion programming and storage

Modular Linear Motor Systems

- Cost effective multi-axis systems easily developed from standard 400LXR modules
- Multi-axis cable management
- Seamless integration with other Parker motion components including ballscrew tables and actuators
- Selectable levels of integration

Custom Engineered Systems

- Single or multi-axis solutions designed "from the ground up" to precisely meet customer requirements
- Systematic process to convert initial concepts into final solutions in the shortest time
- Total system reliability
- CAD generated approval drawings
- Special testing and certification of final performance and specifications

